

LIFE & WEALTH MASTERY

Immerse yourself in a transformation of mind and body to become a master of your health, your wellbeing, your finances and your life

Fiji | April 20 - 26, 2018

Some items may be subject to change, please check tonyrobbins.com for the latest information.

EVENT SCHEDULE

Daily events and classroom activities begin at approximately 8:00 am and conclude by approximately 11:00 pm. A break in the afternoon allows participants to enjoy spa treatments, relax, or enjoy the environment.

REGISTRATION & EVENT TIMES

Life Mastery April 19 from 1:00 - 6:00 PM

Wealth Mastery April 24 - 8:00 to 9:00 AM

Life & Wealth Mastery

Arrival/Departure Dates:

Arrive April 19

Event April 20 - 26

Depart April 27

Life Mastery Only

Arrival/Departure Dates:

Arrive April 19

Event April 20 - 23

Depart April 24

Wealth Mastery Leadership

Arrival/Departure Dates:

Arrive April 22

Event April 23 - 26

Depart April 27

Wealth Mastery Only

Arrival/Departure Dates:

Arrive April 23

Event April 24 - 26

Depart April 27

EVENT LOCATION

Wasawasa Conference Centre, Fiji

ACCOMMODATIONS

To best meet your unique needs, we have provided a variety of room options at our Namale Resort and Wasawasa Conference Centre in Fiji.

For full details on accommodations, amenities and room rates, please see page 2.

BULA! FIJI AWAITS YOU!

Step 1: Enroll in Event

Go to: www.tonyrobbins.com/members

Step 2: Book Accommodations at Namale Resort & Spa or Wasawasa Conference Centre (see page 2)

Email: lifewealthaccommodations@tonyrobbins.com

Call: +858.535.9900 ext. 8370 or 800.445.8183 ext. 8370

Step 3: Book Airline with Global Point Travel Solutions*

Email: fiji@globalpointtravel.com

Call: +858.824.2431 or 800.275.7384

*NOTE: *Your final destination is on the island of Vanua Levu. You can fly into Savusavu airport (closest to the event location) or Labasa airport (a beautiful 1 1/2 hour taxi ride through rainforest).

Step 4: You will obtain your event entrance identification and information packet at registration. Spa, colonic and activity appointments will also be part of the registration process.

Contact your Personal Results Coordinator with any questions or concerns.

Email: lifewealthaccommodations@tonyrobbins.com

Call: +858.713.8299 or 800.445.8183 ext. 2008

Note: A deposit of two (2) night stay is required at the time of reservation. Reservations may not be held without a deposit. Payment in full is required sixty (60) days prior to your scheduled arrival. Cancellation of your stay 60 days or more prior to your scheduled arrival will result in forfeiture of your deposit. Cancellation of your stay within sixty (60) days of your scheduled arrival will result in forfeiture of the full cost of your reservation. We strongly encourage the purchase of Trip Insurance to cover unforeseen challenges that you may encounter with your travel plans.

ACCOMMODATIONS OPTIONS (NAMALE RESORT AND WASAWASA)

Namale is Tony and Sage's home, personal retreat and hideaway, and the #1 Resort & Spa in The Fiji Islands. Inspired by traditional Fijian "bures" (thatched roof bungalow), each unique accommodation is tucked among towering palms, flowering plumeria trees and bright hibiscus, creating a one-of-a-kind experience unmatched anywhere in the South Pacific region.

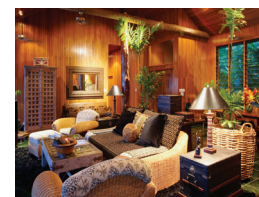
This 5-star resort is the ultimate luxurious retreat that guarantees the ultimate Life & Wealth Mastery experience.

LIFE & WEALTH MASTERY FIJI 2018 - Price Includes Room & Meals

Featured Benefits	Accommodations							
	Wasawasa Conference Center		Namale Resort & Spa					
	Wasawasa Inn	Wasawasa Lodge	Garden Tropical	Ocean Tropical	Ocean Deluxe	Honey-moon	Villa	Dream House
Wasawasa pool	✓	✓	✓	✓	✓	✓	✓	✓
Internet access	✓	✓	✓	✓	✓	✓	✓	✓
Air conditioned rooms	✓	✓	✓	✓	✓	✓	✓	✓
Free 24 hour access to Gym and Kava Bowl for indoor activities			✓	✓	✓	✓	✓	✓
Free access to the hydro-therapy room at the Namale Spa and Sanctuary			✓	✓	✓	✓	✓	✓
Use of Namale Beach and 2 public pools			✓	✓	✓	✓	✓	✓
Offered activities: • Horseback riding • Snorkeling • Water trampoline • Banana boating			✓	✓	✓	✓	✓	✓
Fully stocked mini-fridges in rooms			✓	✓	✓	✓	✓	✓
In room coffee and tea facilities			✓	✓	✓	✓	✓	✓
King sized bed			✓	✓	✓	✓	✓	✓
Private decks with ocean views				✓	✓	✓	✓	✓
Jetted spa tubs					✓	✓	✓	✓
Private pools						✓	✓	✓
Bose® Sound systems and Apple TV movies							✓	✓
Outdoor shower							✓	✓
SINGLE/DOUBLE PRICING *Rates in USD. Pricing inclusive of all meals and taxes per night			\$685	\$788	\$856	\$960	\$1,200	\$1,650
SINGLE PRICING *Rates in USD. Pricing inclusive of all meals and taxes per night	\$250	\$313						
SHARE PRICING *Rates in USD. Pricing inclusive of all meals and taxes per night/person	\$188	\$219						
ROOM OCCUPANCY	Up to 2	Up to 2	Up to 2	Up to 2	Up to 2	Up to 2	Up to 2	Up to 4
PRE/POST BURE RATE PER NIGHT DOUBLE OCCUPANCY *Rates in USD. Pricing inclusive of all meals and taxes per night			\$933	\$1,074	\$1,168	\$1,308	\$1,636	\$2,157



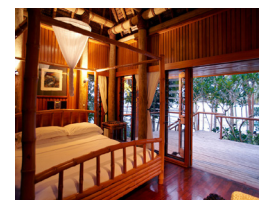
Namale
FIJI'S #1 RESORT & SPA



Dream House living room



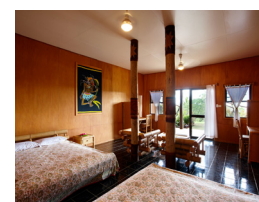
Villa private pool



Honey-moon bure



Garden Tropical bure



Wasawasa Lodge

"#1 Most Romantic Resort in South Pacific"
TripAdvisor Traveler's Choice Awards

Namale Resort & Spa is delighted to announce that Fiji's #1 Resort and Spa is the honored recipient of this highly esteemed award.



NAMALE RESORT & SPA, FIJI ISLANDS

Experience the Crown Jewel of Life & Wealth Mastery Destinations



If you want the ultimate life-transforming experience, consider staying at Anthony Robbins' personal tropical hideaway, Namale Resort & Spa in Vanua Levu, Fiji during your Life & Wealth Mastery event. A stunning 525-acre peninsula, this precious gem called Namale sits regally on the edge of the Koro sea and offers three miles of oceanfront that spreads into a magical rain forest of giant ferns and rushing waterfalls.

Here you'll enjoy luxury accommodations, private beaches and a state-of-the-art spa and wellness center. In your free time, you can snorkel on an untouched reef, hike to a jungle waterfall or explore a traditional Fijian village. During your stay, you'll experience endless activities including water sports and indulgent spa treatments, and you'll be moved by the warm hospitality of the Fijian people.

When your Life & Wealth Mastery experience comes to an end, you will return home from this unparalleled tropical paradise with a fire in your soul that can never be extinguished. You will find yourself excited to share

the genuine warmth and joy for life that you've adopted from the Fijian people as you absorb the fact that you've been blessed to revitalize and renew your very soul in one of the most beautiful places on earth.

Only then will you know why Anthony Robbins calls this place "home." Experience Life & Wealth Mastery in the tropical bliss that is Namale!

In this magical place for rejuvenation you will also enjoy:

- A 10,000-square-foot spa constructed from native palm wood, rock and palm thatch to complement its natural surroundings
- Indulgent treatments from around the world
- Ancient aromas and soothing rhythms that will help guide you on your journey to serenity and relaxation

"Incredibly impressed by the resort. Would 100% recommend to our family and friends. The staff was exceptional."

Rachel, USA

"While attending Life Mastery in Fiji, I discovered my deepest and most profound spiritual side and revitalized my health. My physical and spiritual endurance increased significantly. I can now take long, energizing walks and I have learned that my life purpose is to serve with a warm heart, to live with joy and to love with passion."

Michael Dao, CPA, Arlington, Texas

"The cleanse at Life Mastery was an extraordinary experience – it was what my body desperately needed. To wake up in the morning and bathe in a waterfall, to have the most amazing massage of my life in such a world-class spa . . . what a way to do a seminar! I identified the things I needed to change in my diet and lifestyle to give me the vitality and energy that I experienced during the event for the rest of my life. The local Fijian staff was warm and nurturing, and, best of all, Lori and I got married while we were there in Namale!"

Randy Posvar, Business Marketing Consultant, Bend, Oregon



ADDITIONAL EVENT INFORMATION

SPA TREATMENTS AND THE CLEANSING PROGRAM

During Life Mastery you will be able to enjoy the Namale Spa and Sanctuary which offers world-class treatments designed to support you during the Cleansing Program. We recommend colonics at Life Mastery. Colonics and spa treatments are available at an additional cost.

The Cleansing Program is an integral part of your experience at Life & Wealth Mastery. For those saying at Namale or Wasawasa, the cleansing program is included in your onsite accommodations. Generally, any person in good health should be able to complete this cleanse program (raw foods, wheat grass, vegetable and fruit juices). If for medical or allergy reasons you feel you cannot cleanse, please contact the Life & Wealth Mastery team at lifewealthaccommodation@tonyrobbins.com. We do not recommend intense workouts during the cleanse.

TUITION

All event tuition fees must be paid 60 days in advance. We are not equipped to receive event tuition payments at the Wasawasa Conference Centre. Participants arriving in Fiji without having paid tuition in full in advance will not be admitted to the event and will not be able to check into the resort.

ADDITIONAL TRAVEL INFORMATION

PASSPORT

All participants: Please check with the Fijian Embassy or Consulate in your country for passport and visa information. If your itinerary contains international flights, it is the sole responsibility of each passenger in the itinerary to have the proper documents for entry/re-entry into a country. To obtain documentation requirements, contact the embassy or consulate of all countries involved in your itinerary, including all countries in which you may be transiting.

PACKING & DONATIONS

Please be sure to check Fiji customs regulations when deciding what to pack, and consume or throw away any fresh produce before arriving in the baggage claim/customs area or you could be heavily fined.

Feel free to bring new or used toys and/or clothing and school supplies for children who live in the villages. You will have the opportunity to attend local Sunday church services; afterward, donations for children — from infants to teens — are gratefully accepted. Please note that shopping is extremely limited in Savusavu, and we suggest you pack any donations with you. We appreciate your generosity.

BOOKING FLIGHTS - INTERNATIONAL & INTER-ISLAND

Nadi, Fiji is your first Fijian destination. From Nadi, you will take a short 60-minute inter-island flight to Savusavu or a short 45-minute inter-island flight to Labasa airport, on the northern island of Vanua Levu. When possible, book your entire flight (international and inter-island) at one time, and ask the airline if it is possible to check your luggage through to your

final destination - Savusavu or Labasa. This is easiest to do via Global Point Travel Solutions, and will avoid additional baggage fees (charged by kilo) between your flights.

Book information for Global Point Travel Solutions

Email: fiji@globalpointtravel.com

Call: +858.824.2431 or 800.275.7384

If you do not book with Global Point Travel Solutions, please fill in your flight information on the Travel Planning Form located in your Members Portal.

LAYOVERS & DAY ROOMS

When flying to Fiji from the United States, you will cross the International Dateline and “lose” a day. You “make-up” this day when returning. Because of this change, depending on the departure date and airline, nearly all flights from the USA will arrive in Fiji very early the second day after the date of your departure. If you have a long wait at the airport and would like to get out, day rooms are available at The Fiji Gateway Hotel and The Tokatoka Resort. Please reach out to them directly for details and pricing.

TRANSPORTATION TO WASAWASA & NAMALE

If arriving at Savusavu Airport our staff will transfer you to the Wasawasa Conference Centre or Namale Resort & Spa, via a short 20-minute ride passing through an authentic Fijian village. If arriving at Labasa Airport, you will have a beautiful 1 ½ hour taxi ride through the rainforest to arrive at the Wasawasa Conference Centre. Taxis can be shared by participants and will cost approximately \$65 USD each way (\$125 FJD).

CURRENCY EXCHANGE

We suggest you exchange currency at the airport. There is also a currency exchange in Savusavu and two ATM's: ANZ and Westpac.

IMPORTANT

All questionnaires and signed Terms and Conditions must be received by us no later than 60 days prior to the start of your Life & Wealth Mastery program. Due to the limited availability of flights and accommodations at the Wasawasa Conference Centre, all hotel reservations and flights to Fiji must be made and reported to our office no later than 60 days prior to the start of your Life & Wealth Mastery program. Participants who fail to reserve their travel and accommodations 60 days in advance will be responsible for event transfer fees or forfeiture of attendance at Life & Wealth Mastery if the travel or hotel resources are no longer available for their confirmed event dates. If the event you wish to attend is within the 60 days time frame please contact our Personal Results Coordinator team for information.

WHAT TO BRING TO FIJI

COMFORTABLE, COOL & CASUAL

is the rule for Fiji. The culture is modest, which means that at meals, shirts and cover-ups are necessary. Bring your bathing suits, but when you're not swimming please cover up. Shorts and anything cool are ideal. For the evenings, you'll want some long pants or long-sleeved t-shirts in case it's cool or the mosquitoes are friendly.

During Life & Wealth Mastery, wear whatever you'll be comfortable sitting (and dancing!) in.

Please be aware that all Fiji Airways interisland flights are weight restricted for safety reasons and that depending on load, bags may not travel on same flights as passenger.

For more information, please visit the Fiji Airways website:

<http://www.fiji Airways.com/flight-information/baggage-allowances/>

MUSTS

- Passport (essential!)
- Any necessary visas for international clients
- Athletic shoes — 2 pair, one for regular wear and an old pair for hiking, in the water, etc.
- Reef shoes recommended (Nike and many other companies make them) for snorkeling and reef walking
- Sunblock and tanning lotion
- Tea tree oil (for insect bites) — can be purchased at most health food stores
- Cameras — there's no corner drug store if you run out!
- Hat or visor to protect against the sun
- Bug repellent
- Sandals
- T-shirts and shorts
- Bathing suit

SUGGESTED ITEMS

- Airplane neck pillow for the trip
- Games, cards, frisbees, etc.
- Extra swimsuits
- iPod/mp3 player
- Medicine — if you need any, please bring an extra supply, as, again there's no corner drug store if you run out!

DISCOVERING THE ISLAND AND ITS PEOPLE

The beauty and wonder of the land and people in Fiji are incomparable. You'll have the opportunity to get to know both during your stay! You can take a short walk to the local villages—you'll be sure to experience a warm welcome from young and old alike.

If possible, we'll all spend Sunday morning at the local church, where you can bask in the beautiful acapella singing as the Fijians express their pure devotion and love of God.

Exploring the beautiful landscape of Fiji is always an adventure and a joy. You can discover

waterfalls hidden deep in the foliage; or you can hike the paths that wind past tropical flowers and swaying palms, opening onto sudden vistas of beach and sky.

WHEN YOU ARRIVE IN SAVUSAVU

Once you arrive in Savusavu, you'll be taken by shuttle to the Wasawasa Conference Centre or Namale Resort (depending on your accommodations). Once here, if time allows, you'll be able to settle in and get to know some of your teammates! Registration for Life & Wealth Mastery will be in the afternoon after you arrive at the Wasawasa Conference Centre.

The electricity at the Wasawasa Conference Centre is 240 volts, 50 cycles AC, so participants from the U.S. and Canada will need converters and adapters for any electrical appliances you bring. Fiji and Australia are on the same voltage and outlet system, so if you need to buy converters, ask for the same kind as you'd need in Australia.

A FEW FIJIAN PHRASES FOR YOUR STAY

Since the Fijian people at Namale are part of our extended family, you might like to learn a few of their most commonly used words in advance:

ENGLISH	FIJIAN	PRONUNCIATION
Hello	Ni sa Bula	Nee-sah-boo-lah
Lady	Marama	Mah-ra-ma
Sir	Turaga	Too-rah-ngah
Water	Wai	Why
Yesterday	Nanoa	Nah-no-ah
Good morning	Ni sa Yadra	Nee-sah-yan-dra
Please	Yalo Vinaka	Yah-low-vee-nah-kah
Good-bye	Ni sa Moce	Nee-sah-mothay
No Worries	Seqa No Lega	Senga-nah-lenga
Thank you very much	Vinaka Vaka Levu	Vee-nah-kah-vah-kah-le-vu

